

# TomoTherapy<sup>®</sup> Treatment Plan for Multiple Metastases

This simulated treatment plan demonstrates how the TomoTherapy<sup>®</sup> Hi·Art<sup>®</sup> system can be used to treat multiple lesions without the need to change isocenters.

## The Plan

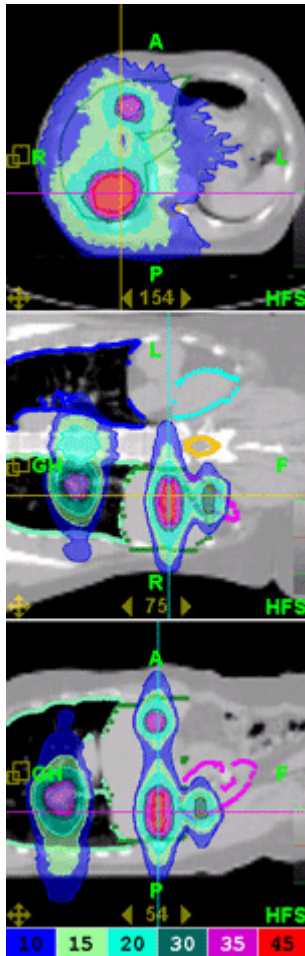


Figure 1: TCS views of *TomoTherapy* treatment plan for multiple metastases.

Figure 1 shows the TCS views for treating multiple lesions of the right kidney, liver, lung and spine in a single treatment plan without irradiating a large volume of healthy tissue. The *TomoTherapy Hi·Art* treatment system can deliver conformal doses to multiple lesions and dose levels while sparing surrounding normal tissue.

## The Goals

- GTV1 (liver lesion): 45 Gy
- GTV2 (liver lesion): 39 Gy
- Kidney lesion: 30 Gy
- 1st Spinal lesion: 30 Gy

- 2nd Spinal lesion: 35 Gy
- Lung lesion: 35 Gy

## The Results

The DVH in Figure 2 demonstrates how the *TomoTherapy Hi-Art* treatment system is able to meet each of these objectives. Tolerance for the right kidney is maintained (no more than 15% of the structure received 20 Gy), while less than 25% of the liver received 10 Gy (well below tolerance).

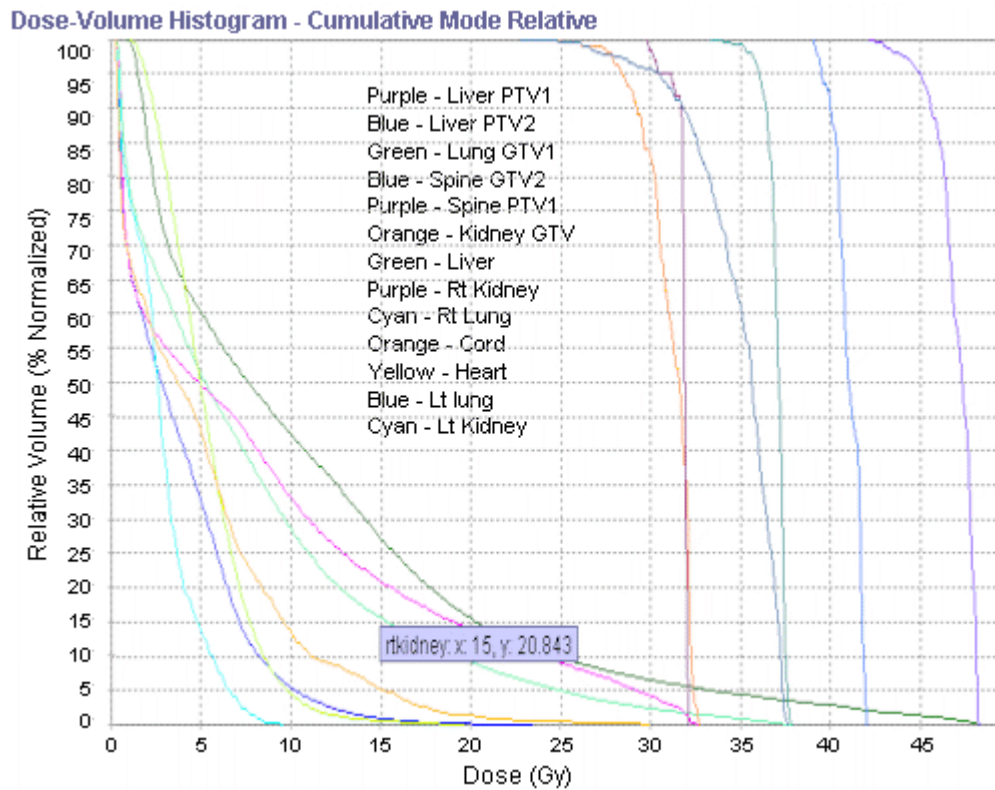


Figure 2: DVH

of *TomoTherapy* treatment plan for multiple metastases.